



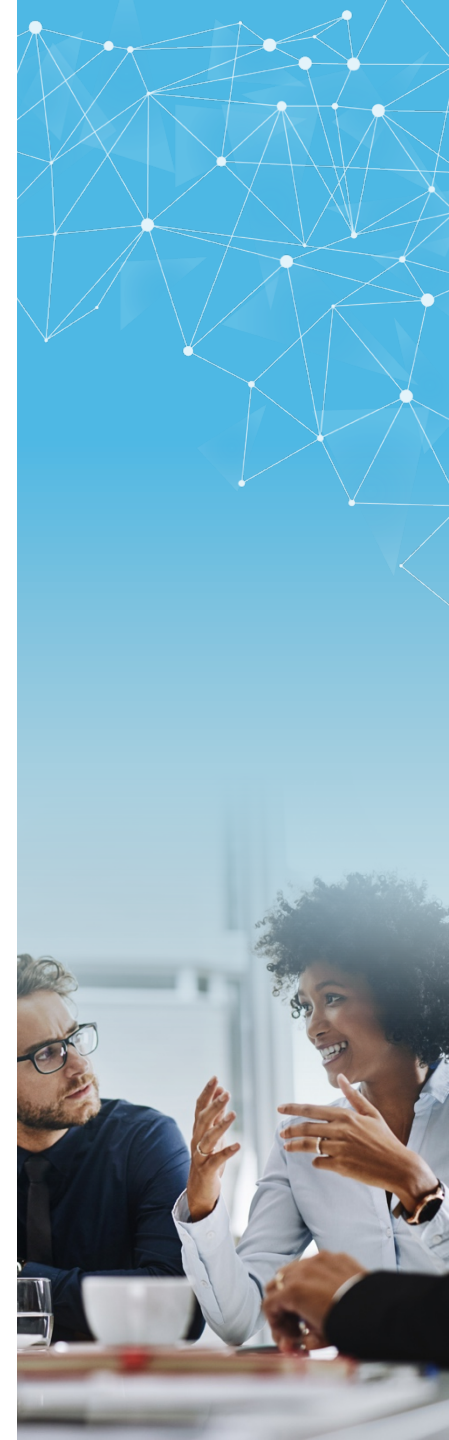
Supporting Collaborative
Research

Sherry Zhao, PhD
Team Lead, BC Business Development

Mitacs supporting collaborative research



Mitacs is a national, independent, not-for-profit organization that fosters growth and innovation.



Mitacs has the experience

Mitacs is an independent,
not-for-profit organization that
fosters global growth and innovation

20 years in operation

67

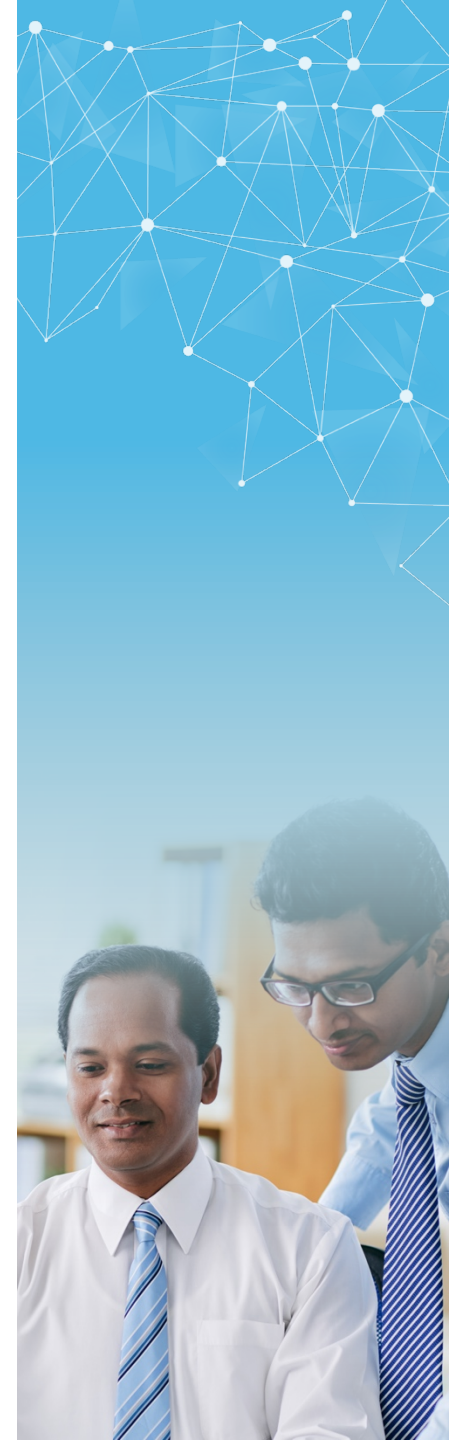
post-secondary partners
in Canada

6,000+

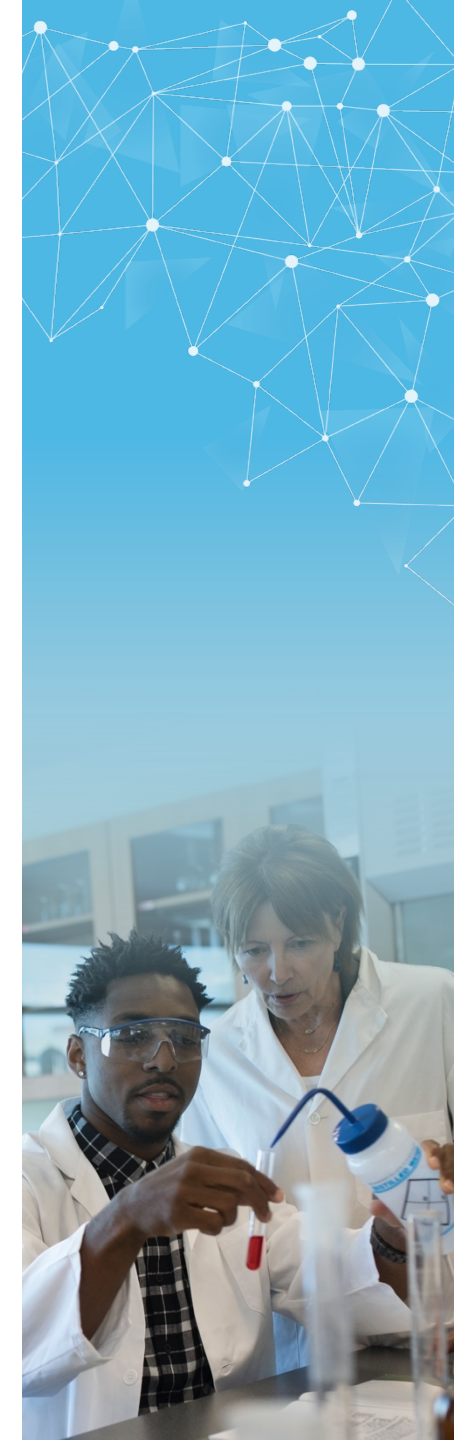
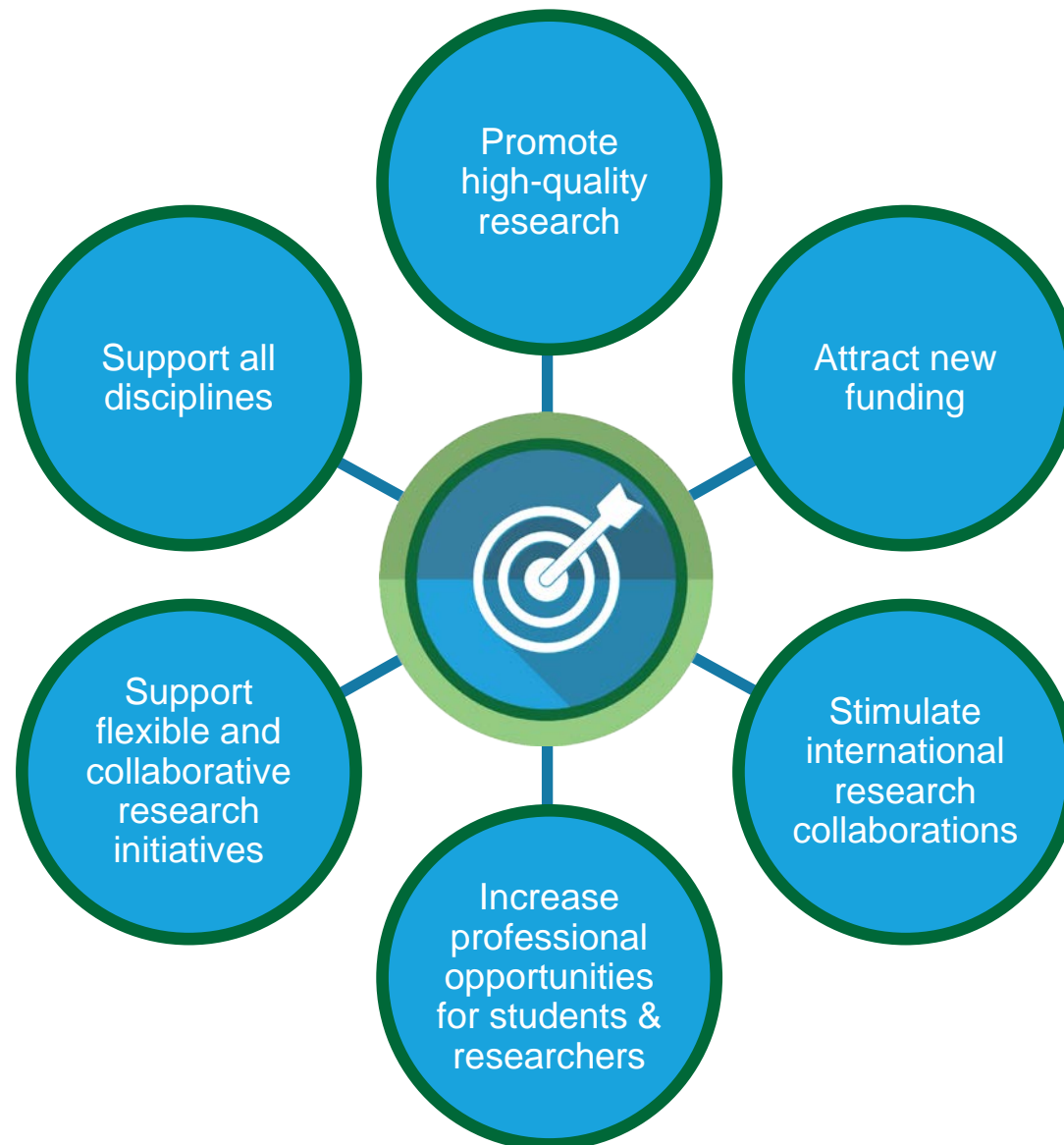
company partners

35,000+
research projects

200+ staff, **30+** offices, **4** regional hubs:
Vancouver | Toronto | Montréal | Ottawa



Our program objectives



Our programs

ACCELERATE

.....

National and international
research collaborations

ELEVATE

.....

2-year postdoc research
collaborations + training

GLOBALINK

.....

International exchange
of students to and
from Canada



Accelerate



[View discussion of this slide](#)

Mitacs

Mitacs Accelerate

More than
20,000
internship modules
in Canada
since 2007

Small- and large-scale
multidisciplinary projects

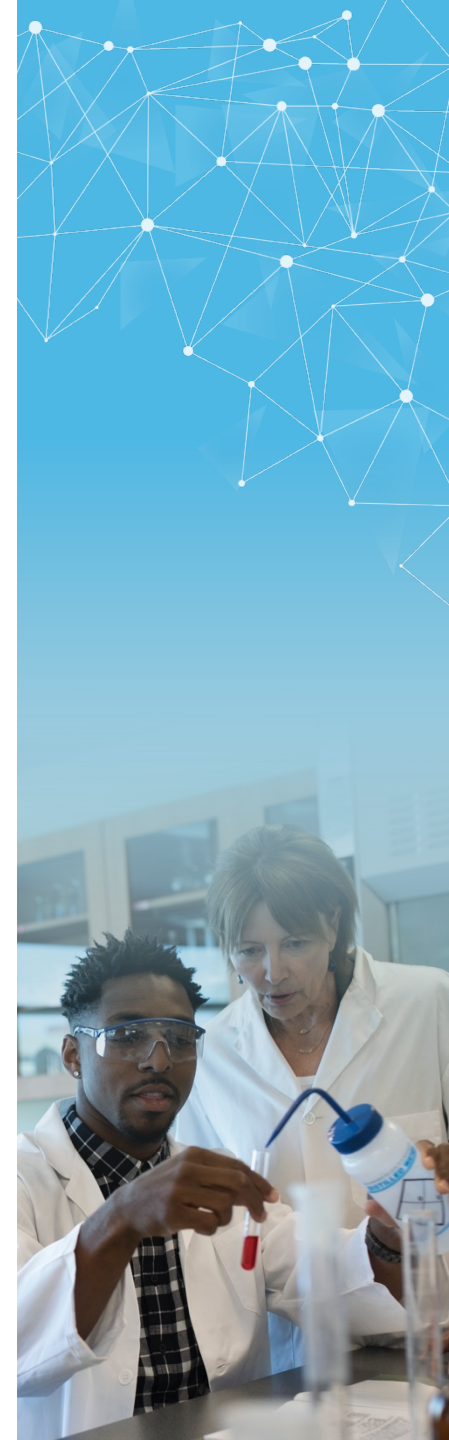
Funding from
\$15,000 to multi-million \$

Over 95%
application
success rate

Quick, simple
application process

Decision within
6–8 weeks

Both domestic and
foreign students and
postdoctoral fellows
are **eligible**

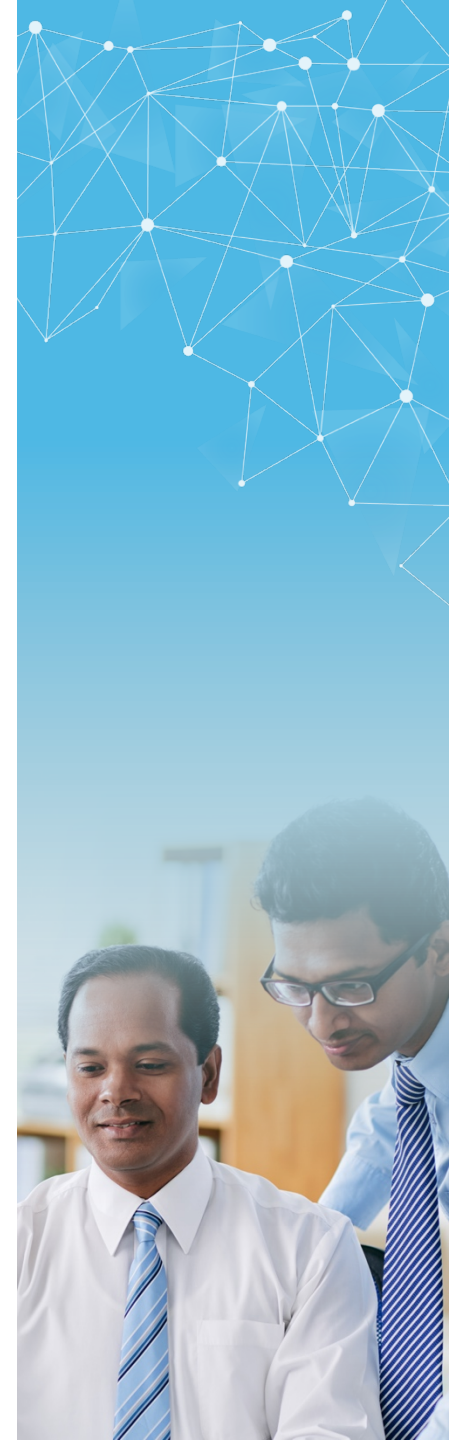


Mitacs Accelerate—strategic partners



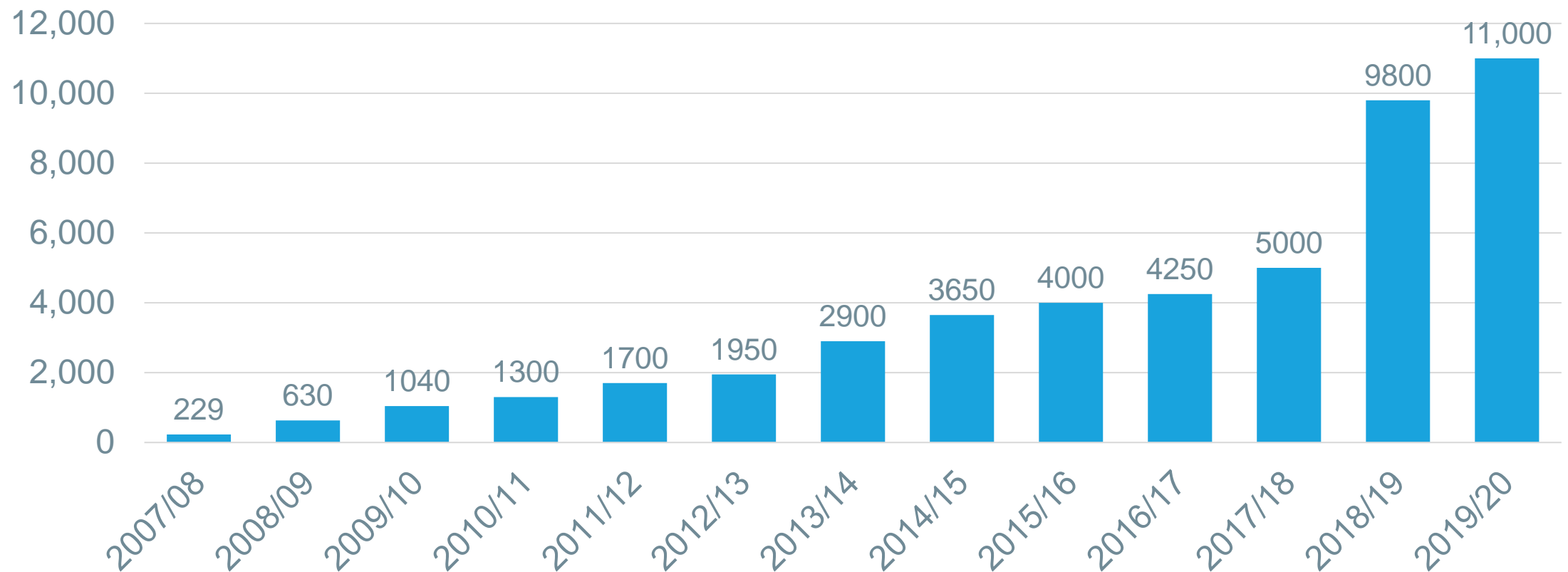
While Accelerate is a standalone funding program, it can be used in conjunction with certain other partnership programs.

So, in such cases, it means your Mitacs grant goes straight to the stipend or other research expenses and does not impact or detract from your other funding.

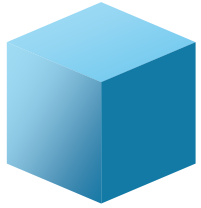


Building research collaborations—Accelerate

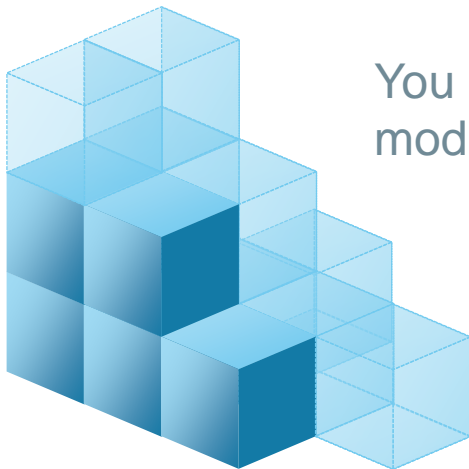
Accelerate internship modules submitted by fiscal year
(projection for 2019/2020)



Mitacs Accelerate



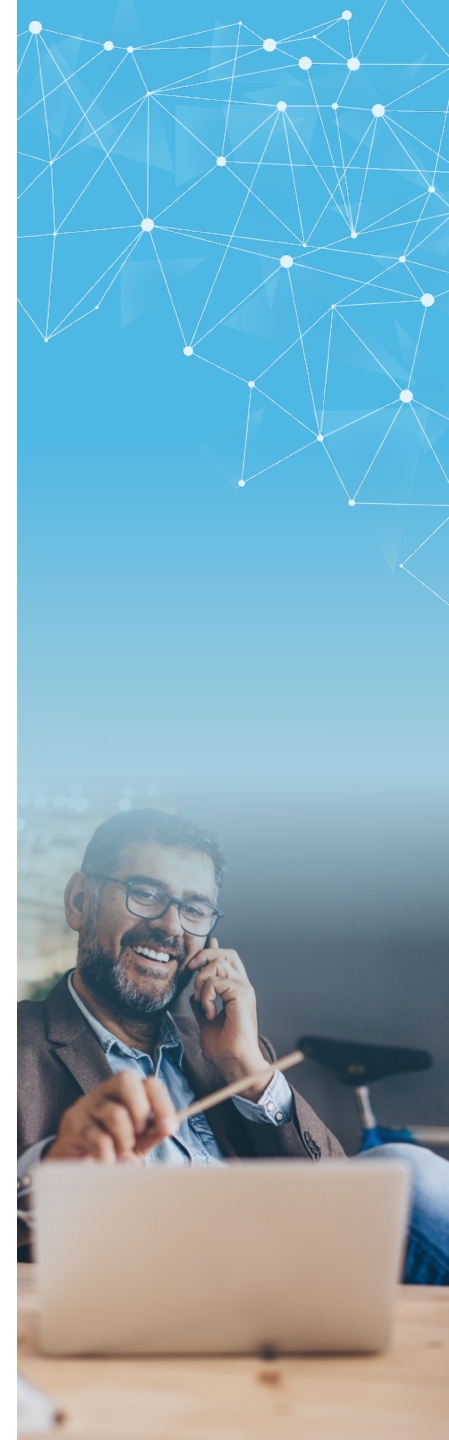
An intern spends a minimum of 4-to-6 months — or **one module** — on a project.



You can have as many modules as you need.



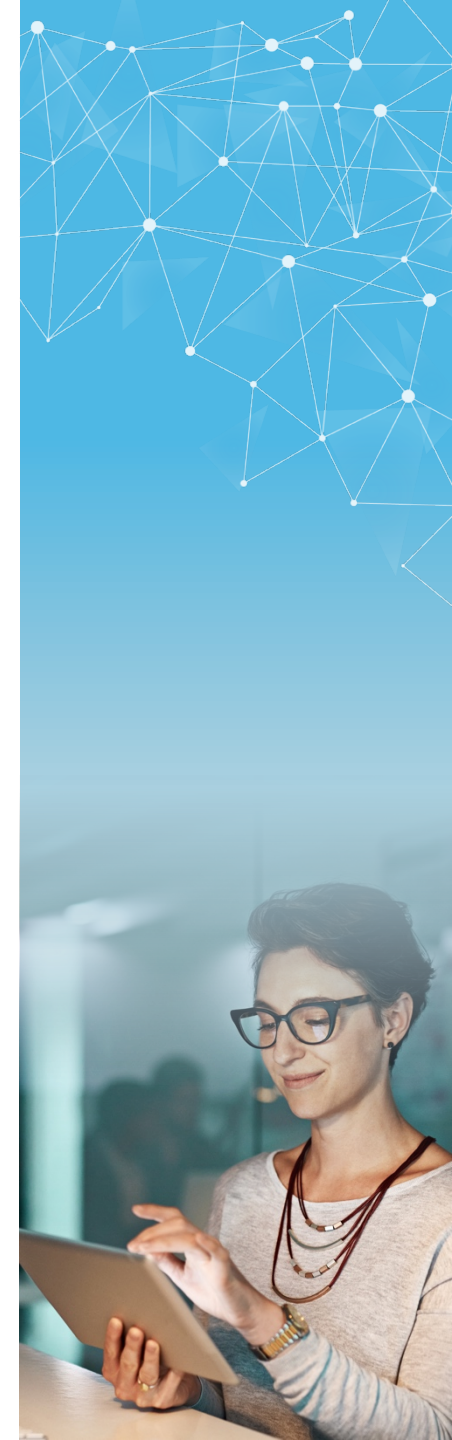
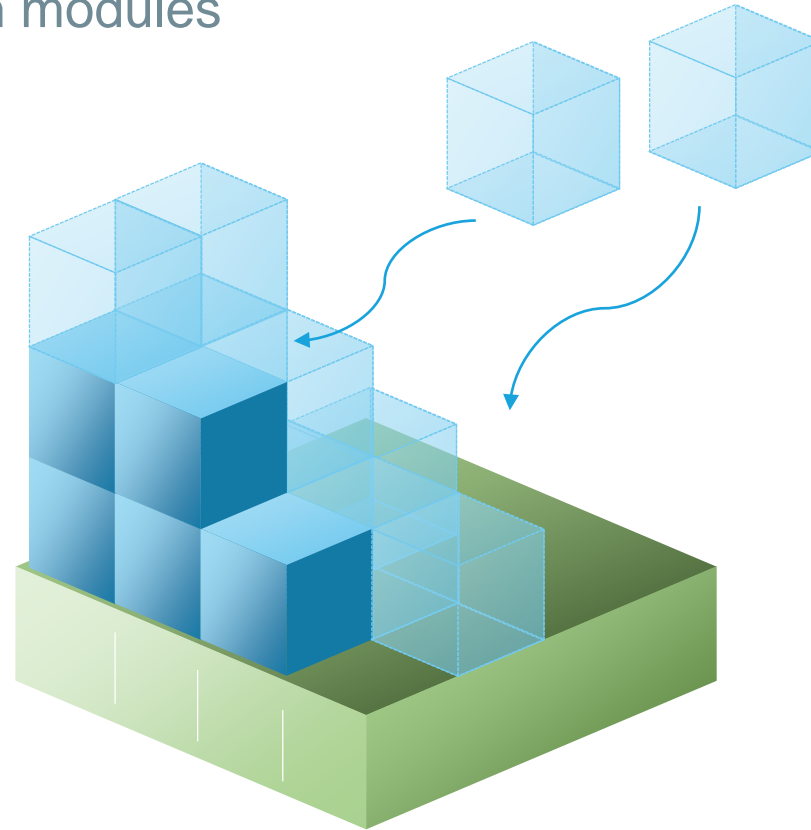
The intern spends a minimum of **25% of their time** at each site (post-secondary institution & partner organization)
Virtual Interactions allowed



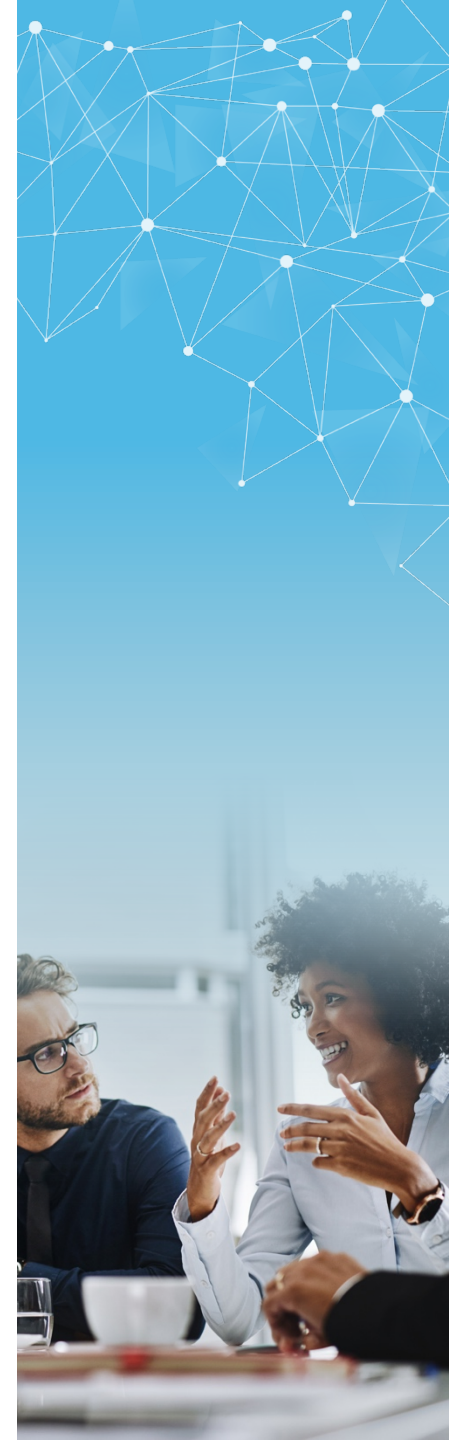
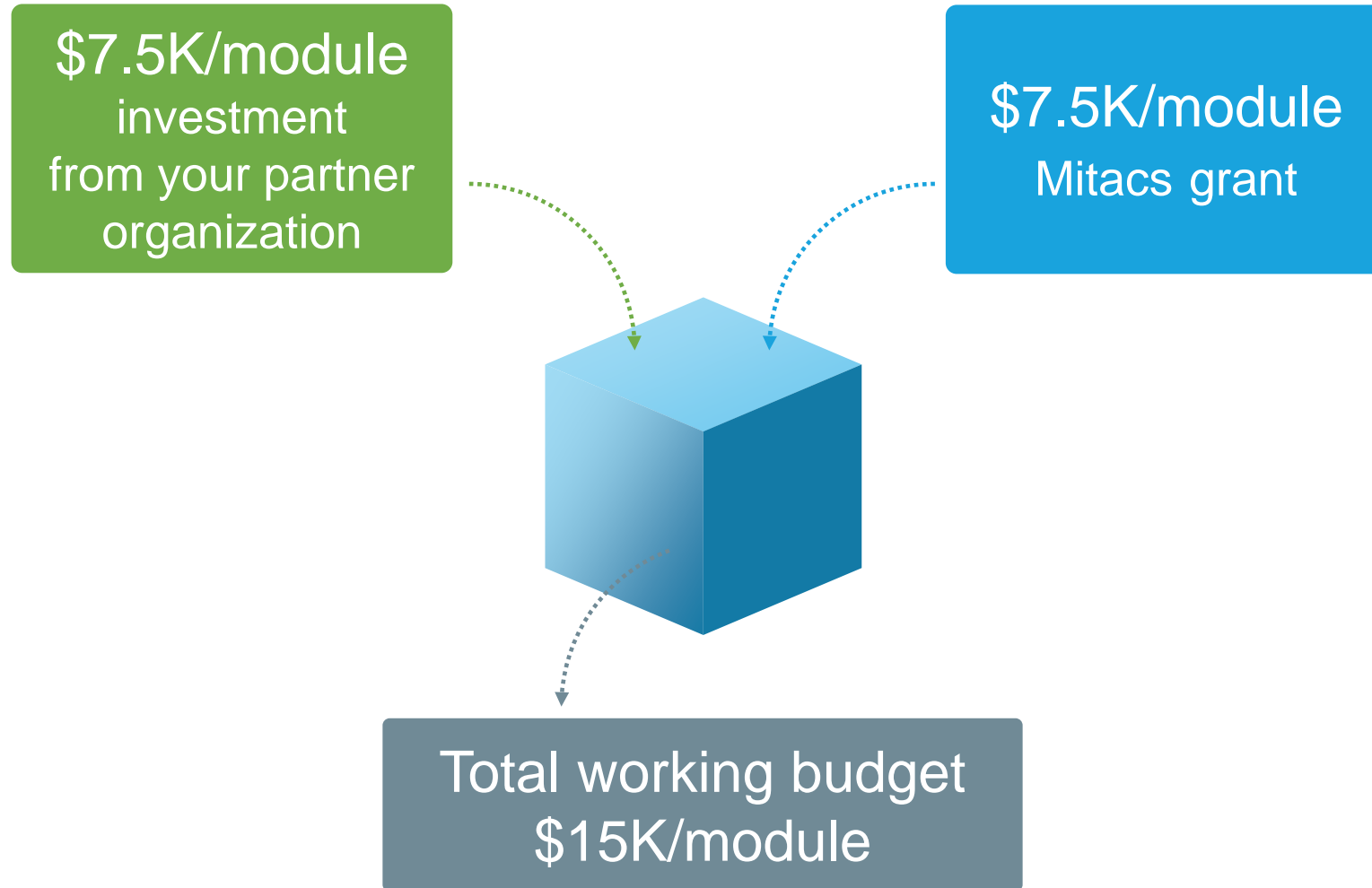
Mitacs Accelerate

Researchers can do multiple 4- to 6-month modules

- Master's up to **4 modules**
(over a 16–24 month period)
- PhD's up to **8 modules**
(over a 32–48 month period)
- Postdocs up to **9 modules**
(over a 36 month period)



Mitacs Accelerate



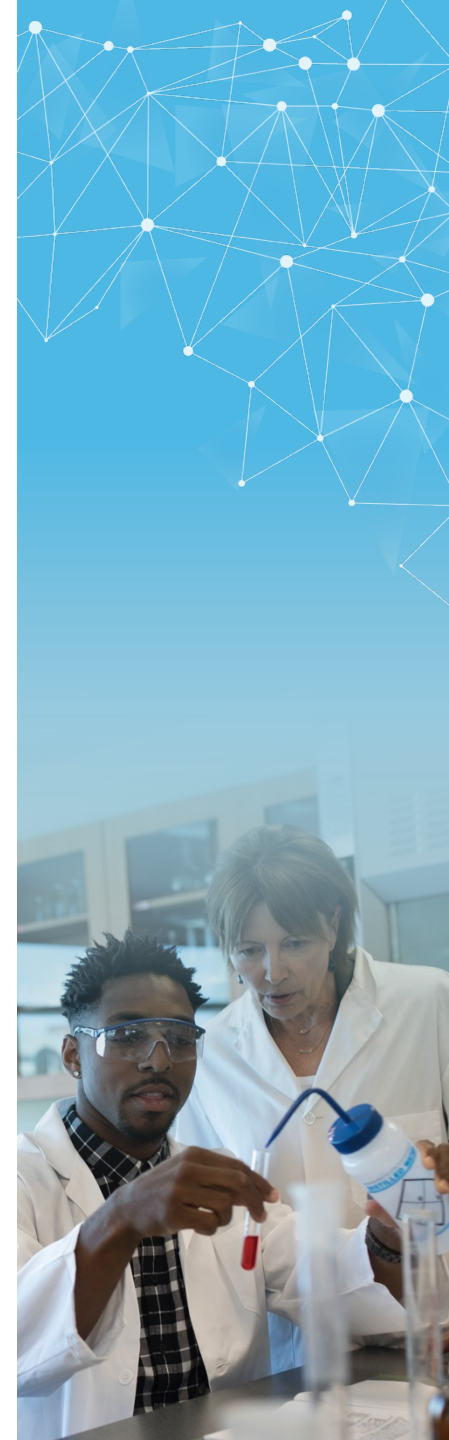
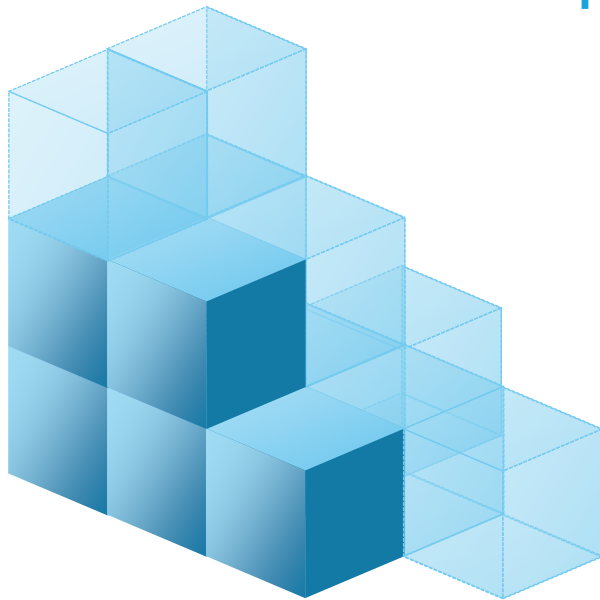
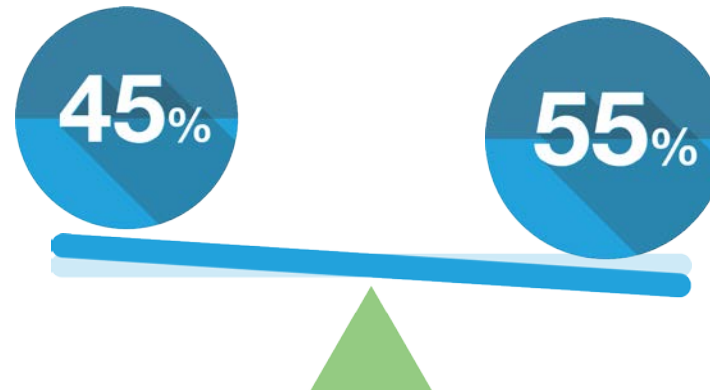
Mitacs Accelerate

Better leveraging is available for larger projects, enabling your research budget to go even further

**At 6 or more
internship modules**

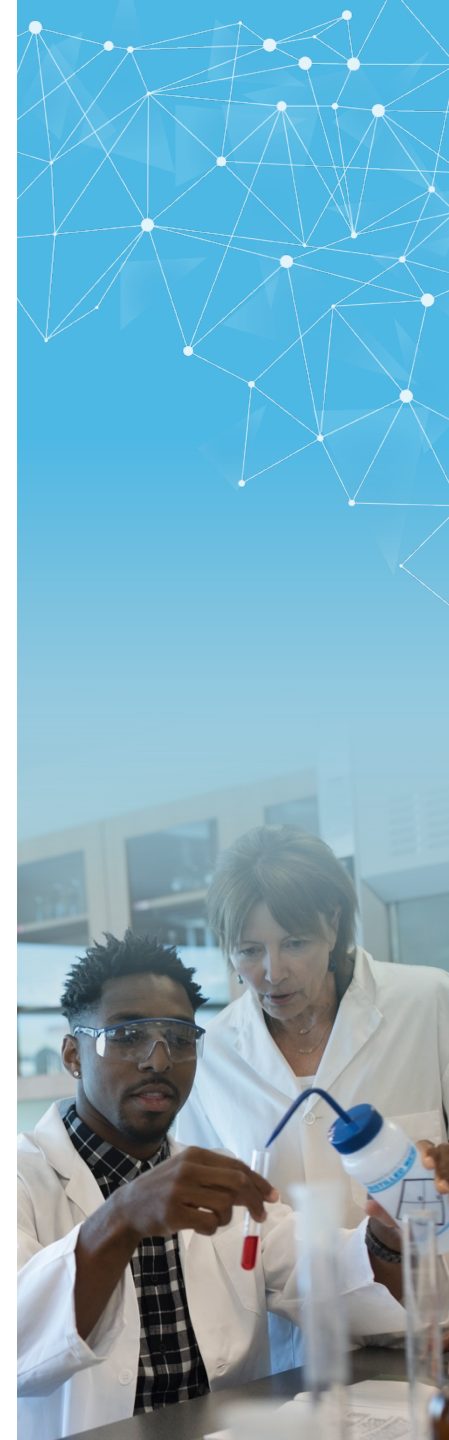
Your partner's
contribution scales
back to 45%

Mitacs's contribution
goes to 55%



Mitacs Industrial Postdoc Fellowship

	Per year
Partner contribution	\$25,000
<i>Total research funding</i>	<i>\$55,000</i>
<hr/>	
Minimum postdoc stipend/salary	\$50,000
<hr/>	
Maximum funds for research costs	\$5,000
<hr/>	

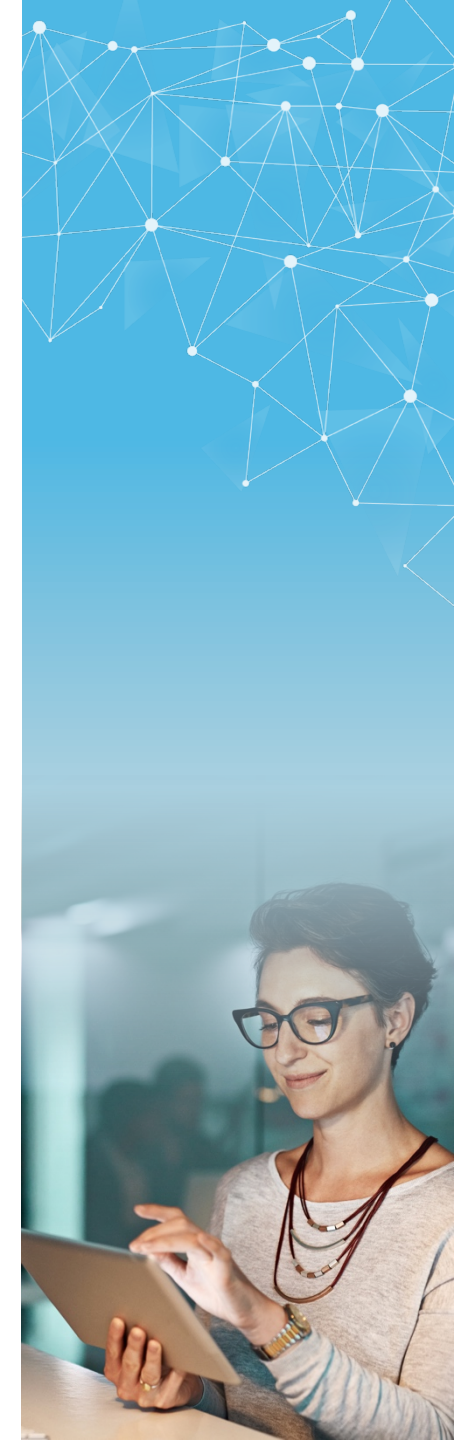
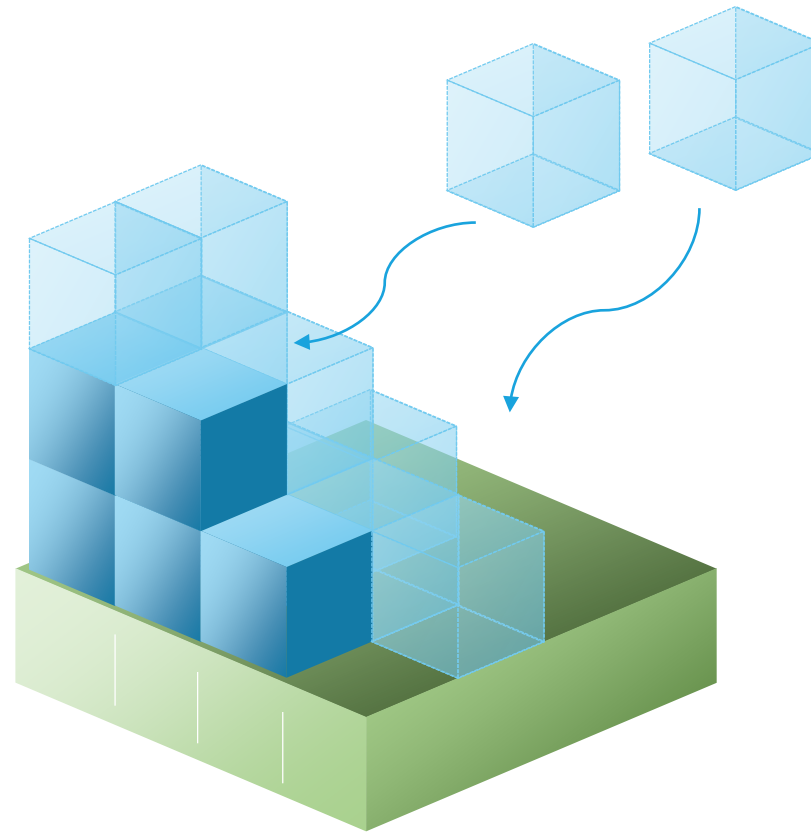


If you have your own start-up...

Accelerate is available to support YOU working in your own start-up

Mitacs Entrepreneur International offers up to \$5000 travel grants

Business Strategy Internship places business students



Elevate



[View discussion of this slide](#)

Mitacs

Mitacs Elevate

Salary/stipend for
postdoctoral fellow

\$55,000
per year for two years

Other expenses
\$5,000
per year for two years

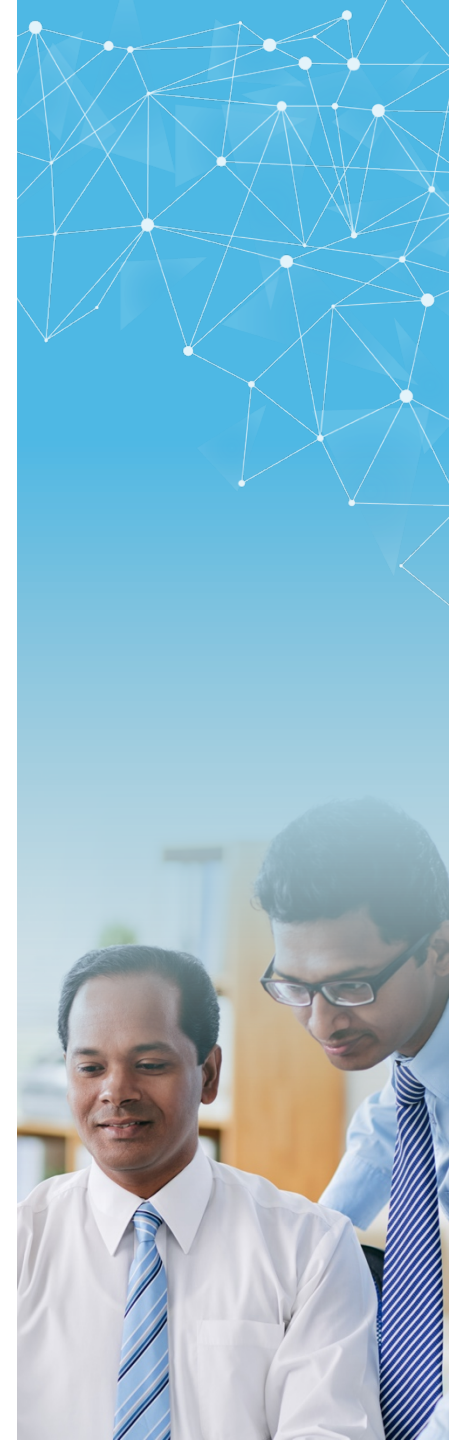
Value of training program
\$7,500
per year for two years

Annual Contributions*

\$30,000
from partner

\$30,000
from Mitacs
(+\$7,500 value in training)

*per year over two years



Thanks to our funding partners

Canada 



Q&A

Sherry Zhao, PhD

604.679.3198
szhao@mitacs.ca



[View Q&A session](#)

Mitacs